



'Ellow 'Ellow

This week at Ellowes Hall

THEME OF NEXT WEEK: Reducing Our Carbon Footprint.
HERO: Leonardo Di Caprio. **SONG OF NEXT WEEK:** Earth Song by Michael Jackson. **CAREER OF THE WEEK:** Nature Conservationist.



Headteacher's Introduction

As we welcome the month of May and the warmer days of the Summer Term, we look ahead to a busy and exciting period for our school community. From the start of the GCSE examination season to a wide range of trips, activities and enrichment opportunities, this is always a significant and rewarding time of year. It has been another positive week in school, with students demonstrating enthusiasm, maturity and a strong commitment to their learning. The examination season began on Thursday with Art, and many more exams will follow in the coming weeks. It is vital that our Year 11 students remain focused and continue to attend the intervention sessions available to them. I would also like to remind parents and carers that staff are readily available to support students during this important time, and that we continue to offer targeted revision and "blast" sessions before each exam. This week has also provided a number of enriching experiences beyond the classroom. Our Bungello students spent an enjoyable and purposeful day at Himley Park, making the most of outdoor learning and exploring the natural surroundings. They conducted themselves exceptionally well, showing respect to others and demonstrating real pride in their school when engaging with members of the local community. The Performing Arts Department has announced its upcoming production of *Grease*, and it has been wonderful to see so many students involved in auditions. I wish all those taking part the very best of luck and encourage others to remember that there are

many opportunities to get involved both on stage and behind the scenes.

Our Year 10 students have also been showcasing their talents in the kitchen, demonstrating impressive culinary skills through the creation of a variety of imaginative chicken dishes. It has been a pleasure to see such creativity, independence and pride in their work. On Wednesday, we were delighted to welcome so many families into school for the Year 9 Parents' Evening, which was successfully combined with our Guided Choices event. It was lovely to see parents and students meeting with staff to discuss progress, before exploring the wide range of subject options available. The choices booklet has been emailed and is also available on the school website, students are asked to submit their preferences during the coming week. This year, we have further expanded our curriculum offer to provide an even broader and more diverse range of subjects. We were also proud to host the Invictus Newsnight-style event on Tuesday, which brought together a panel of distinguished guests to discuss and answer questions on artificial intelligence and its current and future impact on both the local community and education. It was an insightful and thought-provoking evening for all involved.

In closing, I would like to express my sincere thanks to our parents and carers for their ongoing support. Your partnership with the school is invaluable in helping our students succeed and grow in all aspects of their development. I wish everyone in our school community a positive and productive week ahead.

Monday 1st May (Week B)

Bank Holiday: School Closed

Tuesday 5th May (Week B)

Y9 Options Form Deadline, The Big Debate: Climate Change

Tutor Groups with the Best Attendance

| | | |
|---------|---------------------------------|--------|
| YEAR 7 | 7OM – Mrs McEvoy | 99.28% |
| YEAR 8 | 8JMI – Mr Ming | 96.3% |
| YEAR 9 | 9PS – Mrs Strachan | 97.04% |
| YEAR 10 | 10NKH – Miss Nightingale Harris | 96.0% |
| YEAR 11 | 11JW – Miss Watson | 97.83% |

ABSENT PLEASE RING 01384 686600 Option 1



STUDENT OF THE WEEK

Year 7: Taylor P. Year 8: Arlie C.
 Year 9: Poppy H, Alvin N. Year 10: Eva B.
 Year 11: Oscar G, Asiyaa K.

3594 Positives This Week



The next School
Production coming in
November 2026 is...



Please see the Performing Arts Staff for more
details. Auditions are currently taking place
but remember anyone can join the chorus



Our Year 8 Football Team played Streetly Academy in the West Midlands Semi Final on Wednesday. Our students gave it their all in a tight contest with the final result being 2-0 to Streetly. A remarkable achievement getting down to the final 4 in the whole of the West Midlands Cup competition especially in their first year. Roll on Dudley Cup Semi Finals next week!





The Bungello students enjoyed a lovely day out in the sun at Himley. They fed the ducks, walked round the lake and played on the park. Students spent time chatting to all the fishermen around the lake and watched one catch a fish! We finished off the day enjoying a delicious ice cream!



U12 Division 1

League Table

[FULL TABLE DETAIL >](#)

| Pos | Team | P | W | D | L | GD | PTS |
|-----|--------------------------------|----|----|---|----|-----|-----|
| 1 | Billbrook Juniors U12 West | 19 | 17 | 1 | 1 | 79 | 52 |
| 2 | Stourbridge FC U12 | 20 | 17 | 0 | 3 | 59 | 51 |
| 3 | Halesowen Town Boys U12 West | 18 | 11 | 2 | 5 | 14 | 35 |
| 4 | Worcester City Youth U12 Colts | 19 | 10 | 2 | 7 | 19 | 32 |
| 5 | West Hagley U12 West | 18 | 10 | 1 | 7 | 11 | 31 |
| 6 | Halesowen Town Colts U12 South | 18 | 9 | 1 | 8 | 12 | 28 |
| 7 | Halesowen Town Boys U12 East | 20 | 7 | 1 | 12 | -22 | 22 |
| 8 | Billbrook Juniors U12 Squires | 20 | 5 | 2 | 13 | -24 | 17 |
| 9 | Kewford Eagles U12 North | 18 | 5 | 1 | 12 | -28 | 16 |
| 10 | Fordhouses Junior U12 Maroons | 20 | 3 | 2 | 15 | -68 | 11 |
| 11 | Forest Falcons U12 East | 18 | 3 | 1 | 14 | -52 | 10 |



Callum Ormerod and Harley Hartgroves won the Stourbridge District Youth Football Division 1 League at the weekend with their team Billbrook West U12 with still 1 game to play. They've had a fantastic season, only losing one game. Well done!





Year 10 had to joint a chicken and then create dish of their choice and display to a high standard as independently as possible.





Ellowes Hall hosted the Invictus Newsnight Debate on Tuesday, focusing on artificial intelligence and its current and future impact on the local community and education.



STOP PRESS

Polite Notice to Parents and Carers

We kindly ask for your cooperation in helping to keep our school site safe and accessible for everyone at the end of the school day (3.15pm).

Please do not bring vehicles beyond the first set of school entrance gates under any circumstances. In addition, parking is **not permitted** in the area between the entrance gates and the access point to the staff car park. **This space must be kept completely clear at all times.**

These restrictions are in place to ensure the safety of pupils, staff, and visitors, and to maintain clear access for emergency vehicles. Vehicles in these areas create significant safety risks and obstruct essential access routes.

We appreciate that collection times can be busy, and we thank you for your understanding and cooperation in parking considerately in the surrounding area and respecting these rules.

Thank you for helping us maintain a safe environment for all members of our school community.



Jujutsu Self-Defence Club

With 6th Dan instructor *Shihan Robert Tiene*, with over 40 years of experience and part of *Taijutsu Kai Schools of Jujutsu*.

LIMITED SPACES BOOK NOW!

Come and join us! (1st class is free)

We empower students to take control & stay safe.
Practical, reality based self defence classes for all ages.

When: Every Monday @ 3.30pm

Where: Sports Hall

For who: All Year groups

Cost: £7 per session

JUJUTSU



Speak to Mrs Harris for more info.

An opportunity not to be missed!

Enrichment Activities – Summer Term 2026 (Apr - Jul)

| | Monday | Tuesday | Wednesday | Thursday | Friday |
|-------------------------------|---|--|---|--|--|
| Before School | Breakfast in the Diner 8.00 – 8.40am | | | | |
| | | Equality Ambassadors in E3 from 08:20 (BH) | | | |
| 11:15 | | Break Time Thrive Grace Foundation (ES) | Break Time Drop in Grace Foundation (ES) | Break Time Drop in Grace Foundation (ES) | |
| Lunch Time Clubs & Activities | The Library open to all every lunch time | | | | |
| | Y7 Football in PE (Astros) & Year 11 in Sports Hall | Y11 Football in PE (Astros) & Year 10 in Sports Hall | Y10 Football in PE (Astros) & Year 9 in Sports Hall | Y8 Football in PE (Astros) & Year 7 in Sports Hall | Y9 Football in PE (Astros) & Year 8 in Sports Hall |
| | Choir in X1 (WJ) | Drama Scriptwriting Club in X4 (EH) | Drama Games Club in X4 (EH) | Beginners Guitar in X1 (WJ) | KS4 Dance Drop-in in X3 (RG) PE Kit Needed |
| | DT Club in D3 (DBA) & Textiles Club in D7 (TJO) | Christian Union / Drop in Grace Foundation (ES) | Drop in Grace Foundation (ES) | Equality Ambassadors & Space in E3 (BH) | Y7/8 Dance Club in X3/X4 (EH/RG) PE Kit Needed |
| | Boost in Ethos Room 1 (Invitation from VR) | Digital Ambassadors in V3 (OM) KS3 programming club in V3 (DJ) | Keyboard Club in X1 (WJ) | Drama Performance Club in X4 (EH) | Orchestra in X1 |
| | Connect - invite only (MS) In Safeguarding Office | Working Tuesdays (Careers and Health Ambassadors) in V6 (ATP/SR) | HAVE FUN | Y7 Drop in Grace Foundation (ES) | Science Club in S8 (CB) |
| | KS4 Drama Rehearsal in X4 (EH) | Art Club in D5 (HHA) | | The Lunch Bunch in Ethos 2 (MST & VR) | GET INVOLVED |
| | Media Ambassadors in E8 (KRI) | Chess in S2 (DH) Psychology Club in E8 (Week B) SRI | | | |
| | Science Sparx HWK Club in V7 (DH) | Producers Club (WJ) | | | |
| | Parallel Club 15:15 – 15:45 in M10 (AR) | Bright Sparx in V2 (PJ) | Lego Club 15:15 – 16:15 – Ethos Room 1 (VR) | Pickleball Y7 – 11 15:15 – 16:15 (LM) | Advanced Guitar Club 15:15 – 16:00 in X1 |
| After School Clubs Activities | VOLUNTEER | Climbing Club 15.15 – 16:15 See Miss Harris due to numbers | Volleyball in Sports Hall (WJ) | Eco Ambassadors 15:15 – 16:15 in D4 (JMI) | Y11 Dance Rehearsals in X3 (RG) PE Kit Needed |
| | | Rounders Y7 – 11 15:15 – 16:15 (JOP) | Golf (Invite Only) 15:15 – 16:15 | | |
| | | Barcelona Training on Astros (RG) | | | |
| | | Cricket/Softball Y7 – 11 15:15 – 16:15 (JEV) | Y7, 8 (X4) & 9 (X3) Dance Club (RG/EH) | | |
| | | Musical Theatre Club in X4 (EH) | Girls Football (External Coaches) | | |
| | | Film Club 15:15 – 16:15 – Grace Foundation Rooms (ES) | | | |

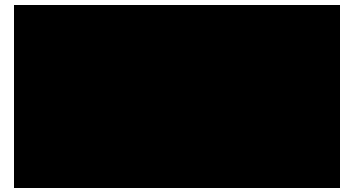
Sparx

Parent/Carer Guide

How to log into Sparx to complete homework from home

Weekly homework will be set on the following days and then due on the same day the following week.

- Monday: Sparx Science
- Wednesday: Sparx Maths
- Thursday: Sparx Reader

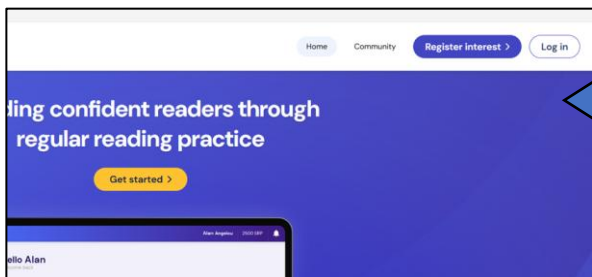
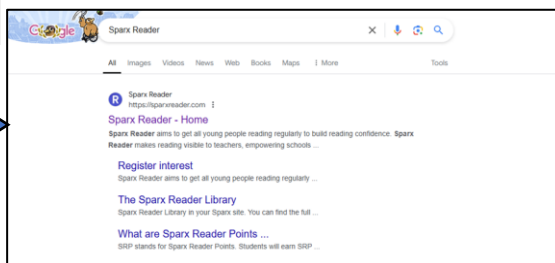


Students can log into Sparx through either [the link on their Arbor page](#) or through a search engine such as Google.

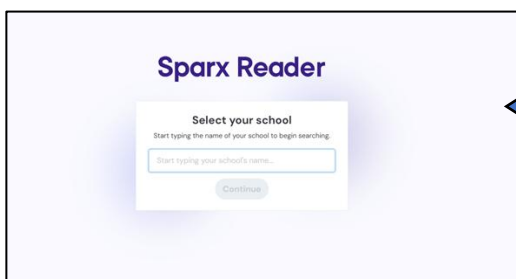


| Subject | Homework set | Homework due in | Detention Night |
|---------|--------------|-----------------|-----------------|
| Maths | Wednesday | Wednesday | Thursday |
| English | Thursday | Thursday | Friday |
| Science | Monday | Tuesday | Tuesday |

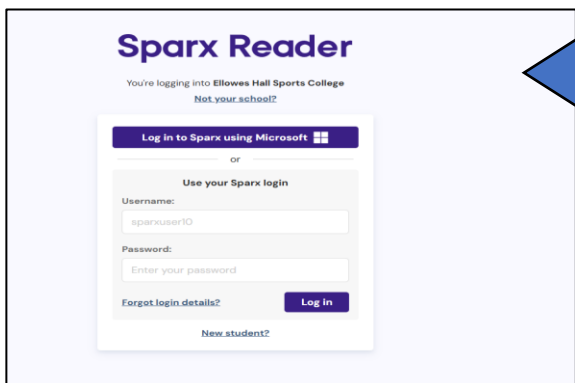
If accessing via Google, students will need to type Sparx Science/ Sparx Maths/ Sparx Reader into Google and select the first search result that appears.



Once they have clicked on either the link on Arbor or the search result on Google they need to click the white log in icon in the top right corner and then select student log in.



They will then be asked to select their school, which will appear as they start typing in Ellowes Hall Sports College



They can then click the purple box that says 'log in to Sparx using Microsoft' and then use their school email and password to log in. Their password is the same password that they use to log into any computer in school.

Any homework students have been set will appear. Students can continue to read on Sparx Reader even after their homework has been completed, and we would encourage them to, especially if they are really enjoying the book they have chosen.

Carousel Homework for Geography and History

- One quiz per week per subject.
- Set and due Thursdays. Monday night detentions.
- Link set by Miss McCormack and Miss Perry to your email. Click this and login with your Microsoft email.
- You have to revise before you can take the quiz (say the answer to each flashcard aloud and then click 'show answer' to test yourself. Self-mark and then move on).
- Take the quiz and self-mark your answers. Be honest as your teacher can see!

Y7 GEOGRAPHY WEEK 1

QUIZ BY MISS PERRY
CLASS: YEAR 7 GEOGRAPHY

REVISE

TAKE QUIZ

Your teacher has locked the quiz.
You must complete the flashcards
before you can take this quiz.

Click REVISE to get started.



9 COMING UP!

Define 'political geography'

SHOW ANSWER

I GOT THIS...

WRONG

NEARLY
RIGHT

RIGHT

HOMEWORK

**ELOWES HALL
KEY STAGE 3
LOVE TO LEARN
HOMEWORK BOOKLET**

This booklet contains a range of tasks from each of your non-core subjects. You will need to use this as part of your homework. Please show your teacher on completion of a task for rewards.

Check in weeks 2025-2026
Autumn term : w/c **8th December**
Spring term: w/c **16th March**
Summer term: w/c **22nd June**

PE LEARNING CHECK LIST

Check in for PE and have your equipment ready to go to PE

| | |
|---|--|
| 1. Complete a 10-minute walk | |
| 2. Successfully complete 10-minute walk | |
| 3. Complete a 10-minute walk | |
| 4. Attend a PE Club for one half-term | |
| 5. Attendance at a local fitness centre | |
| 6. Attend a PE Trip this academic year | |
| 7. Attend a PE Trip to a special of your choice | |
| 8. Visit any sports centres in the city | |

HOME CHALLENGE:
Watch a video on the importance of PE and write a short paragraph about it.

DRAMA LOVE TO LEARN CHALLENGES

Staff Signature & Date

| | |
|--|--|
| Create a Poster of the Physical Skills and their addresses | |
| Design a costume for a new action movie | |
| Attend a Drama Club for a half term | |
| Get involved in a Performing Arts Showcase (either writing or backstage) | |
| Write your own dialogue for a play or script for your class | |
| Design a new set for your favourite TV show or film | |
| Home Challenge: Watch a play or movie and get a photo of judge your own best character | |

KS3 Students (Years 7-9) have also been issued with Love to Learn Homework tasks. These will be checked at 3 checkpoints throughout the year, with effort scores shared with home. Prizes will be awarded for excellent participation!



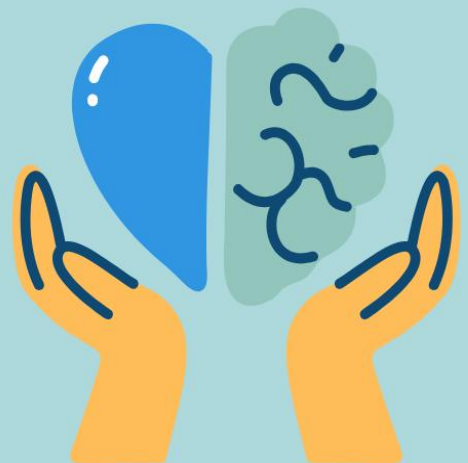
REFLEXIONS DROP-IN SESSION



Drop-in with Reflexions is open to all students who want support on any issues which are impacting on mental health in a confidential space.

Every Thursday

**Physical and Sensory Room
1:30 - 2:15**



TFA

COACHING CAMPS

WHIT WEEK FOOTBALL TRAINING CAMP

TUES 26TH, WEDS 27TH & THURS 28TH MAY

AGES 6-14  BOYS & GIRLS  9AM-3PM

£30/DAY OR **£75**/3 DAYS

ONLINE REGISTRATION

WWW.THEFOOTBALLERSACADEMY.CO.UK

EARLY DROP OFF 8:30-9:00AM **£5**
LATE PICK UP 3-4PM **£10**

CAMP INCLUDES

-  Skills & Drills
-  Individual Comps & Team Tournaments
-  Fantastic 4G Pitch
-  Certificates & Prizes

COACHED BY
RUSS PENN &
JIMMY O'CONNOR

 **STOURTON PARK, STOURBRIDGE**





Time2Breathe

Take time out in nature on a relaxing wellness walk in
2026

Every last Friday of the month at 1-2pm

January 30th - Fens Pools Nature Reserve

February 27th - Wrens Nest National Nature Reserve

March 27th – Bumble Hole Nature Reserve

April 24th - Saltwells National Nature Reserve

May 29th - Barrow Hill Nature Reserve

June 26th – Wrens Nest National Nature Reserve

July 31st – Leasowes Nature Reserve

August 28th – Cotwall End Nature Reserve

September 25th - Saltwells National Nature Reserve

October 30th - Leasowes Nature Reserve

November 27th - Barrow Hill Nature Reserve

December 18th - Saltwells National Nature Reserve

Details to be released each month.

Please call 07971 065712 for further information

