



# 'Ellow 'Ellow

## This week at Ellowes Hall

**THEME OF NEXT WEEK:** Success in the Final Term.  
**HERO:** Nelson Mandela. **SONG OF NEXT WEEK:** Stronger by Kelly Clarkson. **CAREER OF THE WEEK:** Artist.



### Headteacher's Introduction

I would like to extend a warm welcome back to all members of our school community and hope that you enjoyed a restful and enjoyable break. Unlike the return following the Christmas holidays, when motivation can sometimes be harder to find, this week has been characterised by energy, focus, and a strong work ethic from both students and staff. It has been particularly encouraging to see many of our Year 11 students attending school over the Easter break, with some even present on the staff training day. Their commitment is commendable and reflects the positive determination with which they are approaching their examinations, now less than four weeks away.

This week has also provided many opportunities for enrichment and learning beyond the classroom. Our Year 10 Geography students have taken part in fieldwork visits to Carding Mill Valley, producing excellent coursework and, judging by the photographs, thoroughly enjoying the experience. Prior to the break, I mentioned the installation of solar panels as part of our commitment to reducing energy costs and becoming more environmentally sustainable. In this context, I would also like to recognise the valuable contribution of our Eco students, who diligently collect recycling each week and have been working hard in the school garden to grow vegetables that we hope to enjoy later in the

year.

As always, I am impressed by the wide range of activities taking place across the school. Year 9 students recently attended a Careers Event at the Black Country Careers Hub, while Year 7 participated in a Well-being Personal Development Day on Thursday. This included a variety of engaging activities, from performances by Loudmouth Theatre to a juggling workshop and informative sessions on the positive use of social media. I would like to extend my thanks to the Grace Foundation for their support in this valuable event. Looking ahead, our Year 8 students are also eagerly anticipating their upcoming visit to the Black Country Living Museum next Tuesday.

We also recognise the importance of celebrating student achievement. The first of several reward trips will take place next week for selected students in Years 7 and 8. Alongside this, there has been an introduction of some new extra-curricular activities, particularly outdoor pursuits such as climbing. I look forward to also hearing more of our sporting teams' successes as we progress through the summer term.

Finally, I would like to wish all our students a productive and rewarding summer term. We will continue to encourage and support them in striving for their very best. I would also like to thank our parents and carers for their ongoing support, which is vital to our students' success.



### Tuesday 21 April (Week B)

Y8 Black Country Museum Trip

### Friday 24 April (Week B)

Y7 Rewards Trip

### Tutor Groups with the Best Attendance

<b>YEAR 7</b>	7DH – Mr Hamilton	100%
<b>YEAR 8</b>	8RP – Mr Patel	99.43%
<b>YEAR 9</b>	9LM – Mr Martin	98.81%
<b>YEAR 10</b>	10RJ – Mr Jackson	99.21%
<b>YEAR 11</b>	11JW – Miss Watson	99.6%

**ABSENT PLEASE RING 01384 686600 Option 1**



**Year 7:** Carter B. **Year 8:** Nieve E.  
**Year 9:** Abigail A. **Year 10:** Ayla R. **Year 11:** Harry W.

**3306 Positives This Week**



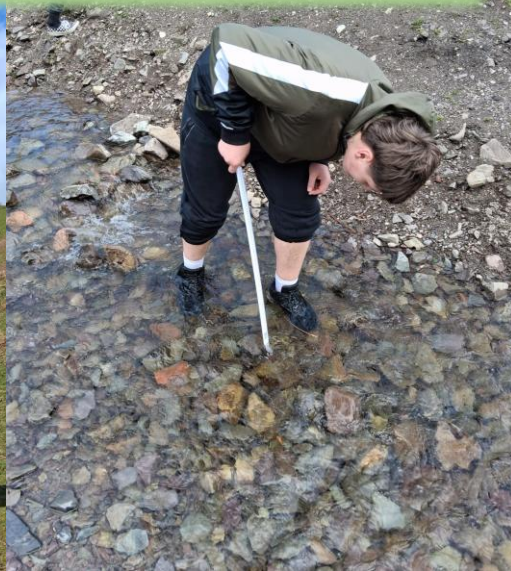


Eco Club have been working hard, recycling paper from all the classrooms and getting the garden prepared for planting.

They have been keeping on top of the weeds and turning the soil over during the Winter and early Spring. Just before the Easter holidays they began planting carrots, onions and beetroot: hopefully these will be ready to harvest before the Summer break.



**This week Y10 Geography students have had a great time complete their GCSE work on the field trip to Carding Mill Valley. As always our students got stuck in, worked hard and demonstrated a fantastic attitude – well done.**



Miss Sabadas decided to have a raffle for members of her 9x/En1 class and reward them for their good behaviour and completion of homework on time since September.

# Homework

Students were randomly chosen by the computer and received a £10 National Book Tokens voucher, a postcard and sweets.

Congratulations go to Lilly Y, Stanley M, and Evie S.



**STOP PRESS**

## Polite Notice to Parents and Carers

We kindly ask for your cooperation in helping to keep our school site safe and accessible for everyone at the end of the school day (3.15pm). **Please do not bring vehicles beyond the first set of school entrance gates under any circumstances.** In addition, parking is **not permitted** in the area between the entrance gates and the access point to the staff car park. This space must be kept completely clear at all times.

These restrictions are in place to ensure the safety of pupils, staff, and visitors, and to maintain clear access for emergency vehicles. Vehicles in these areas create significant safety risks and obstruct essential access routes.

We appreciate that collection times can be busy, and we thank you for your understanding and cooperation in parking considerately in the surrounding area and respecting these rules.

Thank you for helping us maintain a safe environment for all members of our school community.



# Black Country CAREERS HUB

Creating a brighter future for every young person in Dudley

What an inspiring day for Year 9 at the My Future, My Potential careers fair. From chatting with colleges to exploring apprenticeship routes and hands-on training opportunities, our students gained real clarity about the paths open to them. Perfect timing as they get ready to make their option choices and shape the next steps of their journey.

**Dudley Sixth**  
for A levels

**EXPLORE LEVEL**

Subjects in:

- Further Maths
- Geography
- German
- Graphic Commun
- History
- ICT (AQA)
- Law
- Mathematics
- Media Stud
- Photography
- Physics
- Politics
- Psych
- Relig
- Soci
- Span
- Sport & Ex
- Statistics
- Textile Design

**Dudley College of Technology**

**APPLY NOW**

**GET AHEAD**

- Accounting
- Acting
- Administration
- Animal Studies
- Art & Design
- Care (SEN/D)
- Creative
- Culinary
- Music Performance & Production
- Painting & Decorating
- Photography
- Plastering
- Plumbing
- Public Services
- Science
- Special Effects Make Up
- Sport
- Sport Science
- Surveying & Design
- Travel & Tourism

ycol.ac.uk



Jacob Jones of Year 9 passed numerous certificates at his RAF Cadets which is an excellent achievement following a lot of hard work.

## Enrichment Activities – Summer Term 2026 (Apr - Jul)

	Monday	Tuesday	Wednesday	Thursday	Friday
Before School	Breakfast in the Diner 8.00 – 8.40am				
		Equality Ambassadors in E3 from 08:20 (BH)			
11:15		Break Time Thrive Grace Foundation (ES)	Break Time Drop in Grace Foundation (ES)	Break Time Drop in Grace Foundation (ES)	
Lunch Time Clubs & Activities	The Library open to all every lunch time				
	Y7 Football in PE (Astros) & Year 11 in Sports Hall	Y11 Football in PE (Astros) & Year 10 in Sports Hall	Y10 Football in PE (Astros) & Year 9 in Sports Hall	Y8 Football in PE (Astros) & Year 7 in Sports Hall	Y9 Football in PE (Astros) & Year 8 in Sports Hall
	Choir in X1 (WJ)	Drama Scriptwriting Club in X4 (EH)	Drama Games Club in X4 (EH)	Beginners Guitar in X1 (WJ)	KS4 Dance Drop-in in X3 (RG) PE Kit Needed
	DT Club in D3 (DBA) & Textiles Club in D7 (TJO)	Christian Union / Drop in Grace Foundation (ES)	Drop in Grace Foundation (ES)	Equality Ambassadors & Space in E3 (BH)	Y7/8 Dance Club in X3/X4 (EH/RG) PE Kit Needed
	Boost in Ethos Room 1 (Invitation from VR)	Digital Ambassadors in V3 (OM) KS3 programming club in V3 (DJ)	Keyboard Club in X1 (WJ)	Drama Performance Club in X4 (EH)	Orchestra in X1
	Connect - invite only (MS) In Safeguarding Office	Working Tuesdays (Careers and Health Ambassadors) in V6 (ATP/SR)		Y7 Drop in Grace Foundation (ES)	Science Club in S8 (CB)
	KS4 Drama Rehearsal in X4 (EH)	Art Club in D5 (HHA)		The Lunch Bunch in Ethos 2 (MST & VR)	
	Media Ambassadors in E8 (KRI)	Chess in S2 (DH) Psychology Club in E8 (Week B) SRI			
	Science Spaxr HWK Club in V7 (DH)	Producers Club (WJ)			
	Parallel Club 15:15 – 15:45 in M10 (AR)	Bright Spaxr in V2 (PJ)	Lego Club 15:15 – 16:15 – Ethos Room 1 (VR)	Pickleball Y7 – 11 15:15 – 16:15 (LM)	Advanced Guitar Club 15:15 – 16:00 in X1
After School Clubs Activities		Climbing Club 15.15 – 16.15 See Miss Harris due to numbers	Volleyball in Sports Hall (WJ)	Eco Ambassadors 15:15 – 16:15 in D4 (JMI)	Y11 Dance Rehearsals in X3 (RG) PE Kit Needed
		Rounders Y7 – 11 15:15 – 16:15 (JOP)	Golf (Invite Only) 15:15 – 16:15		
		Barcelona Training on Astros (RG)	Y7, 8 (X4) & 9 (X3) Dance Club (RG/EH)		
		Cricket/Softball Y7 – 11 15:15 – 16:15 (JEV)	Girls Football (External Coaches)		
		Musical Theatre Club in X4 (EH)			
		Film Club 15:15 – 16:15 – Grace Foundation Rooms (ES)			



Our Reading Ambassadors went on their termly reward trip just before Easter to replenish stock in the library. They picked some excellent choices including some new graphic novels and comics. We are very excited to introduce these new titles to make sure all of our students are able to pick choices they are interested in! Again, they were exemplary in the book shop embodying what it means to be an Ellowes' student.

"COMING SOON: Our Media Ambassadors are very excited to be launching Ellowes very first podcast "We, Talk!. Stay tuned for more information. If you would like to be featured on our future podcasts, please contact [krichards@ellowes.dudley.sch.uk](mailto:krichards@ellowes.dudley.sch.uk)"



**COMING SOON**  
podcast  
**We. talk!**

# Sparx

## Parent/Carer Guide

### How to log into Sparx to complete homework from home

Weekly homework will be set on the following days and then due on the same day the following week.

- Monday: Sparx Science
- Wednesday: Sparx Maths
- Thursday: Sparx Reader

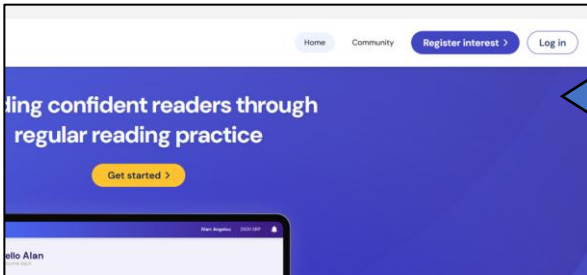
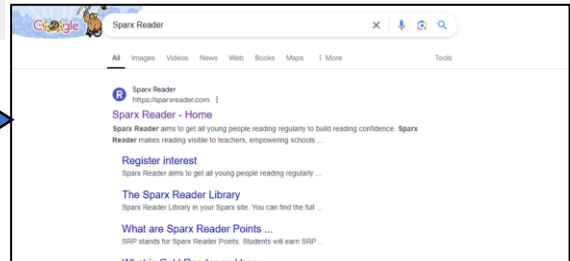


Students can log into Sparx through either [the link on their Arbor page](#) or through a search engine such as Google.

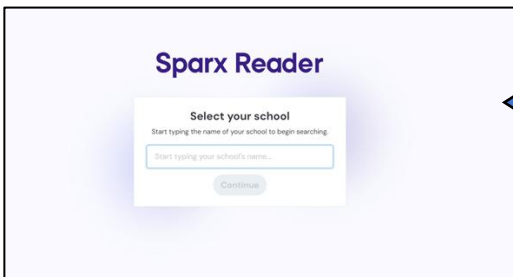


Subject	Homework set	Homework due in	Detention Night
Maths	Wednesday	Wednesday	Thursday
English	Thursday	Thursday	Friday
Science	Monday	Tuesday	Tuesday

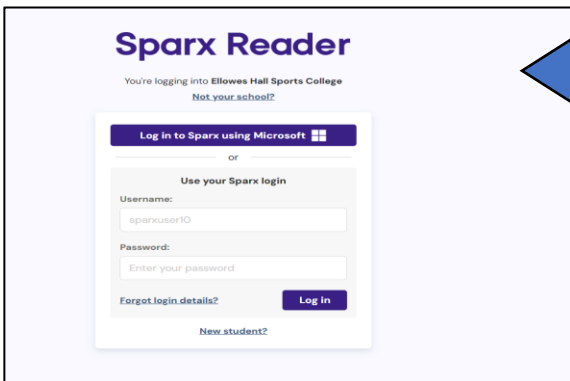
If accessing via Google, students will need to type Sparx Science/ Sparx Maths/ Sparx Reader into Google and select the first search result that appears.



Once they have clicked on either the link on Arbor or the search result on Google they need to click the white log in icon in the top right corner and then select student log in.



They will then be asked to select their school, which will appear as they start typing in Ellowes Hall Sports College



They can then click the purple box that says 'log in to Sparx using Microsoft' and then use their school email and password to log in. Their password is the same password that they use to log into any computer in school.

Any homework students have been set will appear. Students can continue to read on Sparx Reader even after their homework has been completed, and we would encourage them to, especially if they are really enjoying the book they have chosen.

## Carousel Homework for Geography and History

- One quiz per week per subject.
- Set and due Thursdays. Monday night detentions.
- Link set by Miss McCormack and Miss Perry to your email. Click this and login with your Microsoft email.
- You have to revise before you can take the quiz (say the answer to each flashcard aloud and then click 'show answer' to test yourself. Self-mark and then move on).
- Take the quiz and self-mark your answers. Be honest as your teacher can see!

## Y7 GEOGRAPHY WEEK 1

QUIZ BY MISS PERRY  
CLASS: YEAR 7 GEOGRAPHY

REVISE

TAKE QUIZ

Your teacher has locked the quiz.  
You must complete the flashcards before you can take this quiz.

Click REVISE to get started.



9 COMING UP!

Define 'political geography'

SHOW ANSWER

I GOT THIS...

WRONG

NEARLY  
RIGHT

RIGHT

# HOMEWORK

**ELOWES HALL  
KEY STAGE 3  
LOVE TO LEARN  
HOMEWORK BOOKLET**

This booklet contains a range of tasks from each of your non-core subjects. You will need to use this as part of your homework. Please show your teacher on completion of a task for rewards.

Check in weeks 2025-2026  
Autumn term : w/c **8<sup>th</sup> December**  
Spring term: w/c **16<sup>th</sup> March**  
Summer term: w/c **22<sup>nd</sup> June**

PE LOVE TO LEARN CHECK LIST	
1. Complete a 30-minute walk	
2. Successfully complete 10 minutes of	
3. Complete a 10-minute walk	
4. Attend a PE Club for one half-term	
5. Attendance at a local fitness club	
6. Attend a PE Trip this academic year	
7. Attend a PE Trip to a special of your choice	
8. Visit any sports facilities in the city	
<b>HOME CHALLENGE:</b> Write a poem about your favourite sport	

Drama LOVE TO LEARN CHALLENGES	
Create a Poster of the Physical Skills and their addresses	
Design a costume for a new action movie	
Attend a Drama Club for a half term	
Get involved in a Performing Arts Showcase (either writing or backstage)	
Write your own dialogue for a play	
Design a new set for your favourite TV show or film	
<b>Home Challenge:</b> Watch a musical on YouTube and get a photo of judge your own award certificate	

**KS3 Students (Years 7-9) have also been issued with Love to Learn Homework tasks. These will be checked at 3 checkpoints throughout the year, with effort scores shared with home. Prizes will be awarded for excellent participation!**



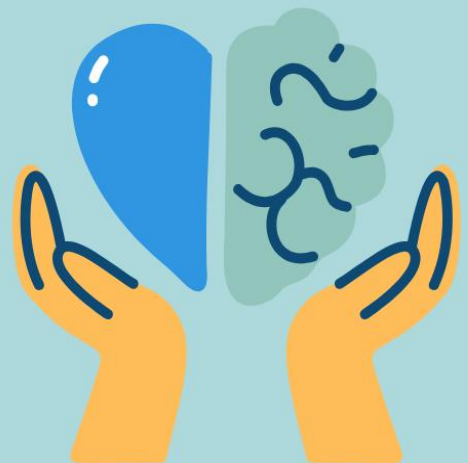
# REFLEXIONS DROP-IN SESSION



Drop-in with Reflexions is open to all students who want support on any issues which are impacting on mental health in a confidential space.

**Every Thursday**

**Physical and Sensory Room  
1:30 - 2:15**





# Time2Breathe

Take time out in nature on a relaxing wellness walk in  
*2026*

**Every last Friday of the month at 1-2pm**

**January 30<sup>th</sup> - Fens Pools Nature Reserve**

February 27<sup>th</sup> - Wrens Nest National Nature Reserve

**March 27<sup>th</sup> – Bumble Hole Nature Reserve**

April 24<sup>th</sup> - Saltwells National Nature Reserve

**May 29<sup>th</sup> - Barrow Hill Nature Reserve**

June 26<sup>th</sup> – Wrens Nest National Nature Reserve

**July 31<sup>st</sup> – Leasowes Nature Reserve**

August 28<sup>th</sup> – Cotwall End Nature Reserve

**September 25<sup>th</sup> - Saltwells National Nature Reserve**

October 30<sup>th</sup> - Leasowes Nature Reserve

**November 27<sup>th</sup> - Barrow Hill Nature Reserve**

December 18<sup>th</sup> - Saltwells National Nature Reserve

**Details to be released each month.**

**Please call 07971 065712 for further information**

